

St. Timothy Evangelical Lutheran Church
Monthly Newsletter
4200 Carlisle Pike
Camp Hill, Pennsylvania 17011
717.737.5243 or 717.737.3773
www.sttim.com

October
2011
Volume 19
Issue 10

The Mission Edge

Men & Women of St. Timothy

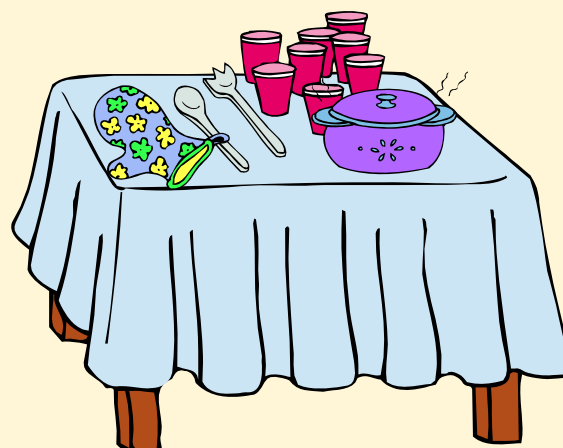


September 17th Trip to Air & Space Museum, Chantilly, VA

St. Timothy Women Fall Soup & Salad Luncheon

*Sunday October 9th at Noon in
Downstairs Lounge*

*Bring a Soup, Salad, Bread,
Dessert and/or
Beverage to Share
Sign-ups in Entryway*



From the Pastor's Desk:

There have understandably been questions about the actual dates for the Small Groups that will be formed for questions and discussion about the information contained in the manila resource packet you received in the mail recently. Well, we have dates! Below are the dates and times that seem to present the easiest availability. These meetings are open to St. Timothy members:

***October 23rd** during the Sunday school hour (9:15 to 10:15 am), with a combined Sunday school running concurrently for the kids downstairs; and

***November 2nd**, a Wednesday night, from 7 to 8 pm, with babysitting provided by vetted members.

You need *not* go to both, of course. The times are provided so that you may pick the best one for you. There will be three areas in the Church used each time – the back Sunday school rooms (3, 4, & 5), the Sanctuary, and the Lounge downstairs. These groups will be arranged alphabetically to even out the numbers of each. Each group will have a discussion leader to ensure that all have an opportunity to talk if they wish, and to see that the discussion is limited to the topic and time factor. Pastor and his wife will not be present in any of the groups. *Some* copies of the resources will be on hand, but bring yours from home if you can. In addition, copies of reports will be provided from the teams sent by the Ad Hoc committee to evaluate the churches of three different Lutheran bodies.

The Plenary or large group session will then be held on **Wednesday, November 16th, 2011** at 7 pm in the Sanctuary. This meeting, as with the others, will be held to an hour. The purpose here will be to provide more opportunity for discussion. The Pastor and leadership will be present to answer questions. The moderator will be the President of the Church Council, John Hileman. Again, the President is with us to give everyone who wishes an opportunity to speak, to maintain a civil atmosphere, and to hold us as closely to the hour as possible. There will be some attempt to discern the direction of the congregation, but it will NOT be a vote, which can only take place at an official scheduled congregational meeting. Babysitting will be provided by vetted members.

Just to bring you up to speed: There are two official congregational votes needed to separate from the ELCA, each at a specially held congregational meeting. The first will be scheduled no less than 30 days after a decision has been made by Church Council to set it and a letter is sent to the Synod. During this 30 days will be a consultation with the Synodical Bishop, the substance and date of which will be determined by him. After the First vote, which must be a 2/3 majority in favor of separation, there will be a 90-day period, again one of consultation with the Bishop. The Second vote, needing to pass again by a 2/3 majority, will be taken at the end of the 90-day period. It will also be determined at this time as to which Lutheran body we wish to join.

I'm hoping that you will attend each of these two opportunities, both a Small Group & the Plenary session. Mark your calendars now so that you may be free to take part.

Peace to you from our Lord Jesus Christ,

Pastor Keith &
The Church Council of St. Timothy

Volunteers Needed for Hersheypark

(Money earned goes to St. Timothy)

October dates include the following:

- Saturday, October 1st: 11 AM - 4 PM Hersheypark
- Sunday, October 2nd: 11 AM - 4 PM Hersheypark



If anyone is interested, please e-mail Nancy Frankenfield at nfrankenfield@hmc.psu.edu or call her on her cell phone at 717-350-0489.

Thank you to everyone that has volunteered so far at Hersheypark. All of your efforts are appreciated.



“A Coke & A Candy Bar”



What have you done for your church this week? Remember, for the price of a “coke and a candy bar”, \$3 extra each week in your church giving will help to continue the STLC Mission. Have you noticed the special envelopes in the pews for this Faith Income Project?



Lutheran World Relief

Sunday, October 2nd

SOAP – Clean and Beautiful

This year, the St. Timothy LWR Outreach Project is to collect SOAP. In 2010, we contributed 136 bars of soap toward the Lower Susquehanna Synod's total collected of 7,671 bars of soap.

No one likes to be dirty. A brand new bar of soap lets someone present him or herself with dignity, to keep their hands clean and to stay healthy. Those simple things are some of the very building blocks to success. LWR accepts **new bars of any brand of soap, in its original wrapping**. All bar sizes are accepted; however, bath-size bars (4-5 oz.) are preferred. Please bring in your bars of soap prior to and on **SUNDAY OCTOBER 2nd** so the soap can be delivered to the designated collection site on October 15th.



If you prefer to donate money, these funds can be used to either purchase additional bars of soap or to help defray the cost of shipping the soap overseas. LWR's approximate cost to handle and ship an 18-pound carton of soap overseas is \$11.60. Look for the designated area in the NARTHEX to place donated bars of soap.

**ST. TIMOTHY LUTHERAN CHURCH
REPORT OF STEWARDSHIP GIVING / FINANCIAL STATUS
For the Month of August 2011**

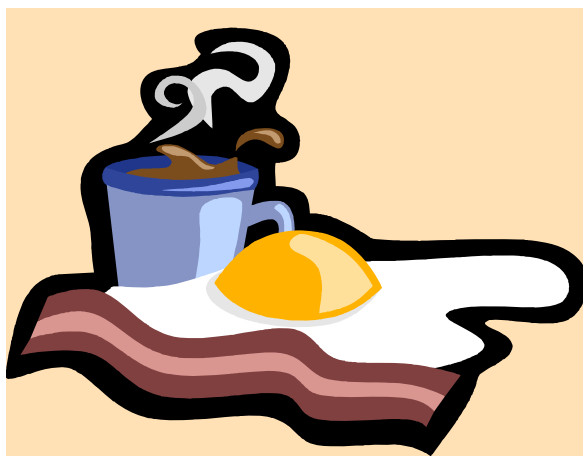
	ACTUAL Envelope/Plate/ Special Receipts	NEEDED Envelope/Plate/ Special Receipts	Positive (Negative) Treasures
Current Month	\$ 11,123.75	\$ 16,272.00	\$ (5,148.25)
Current Year-to-Date	\$ 28,025.79	\$ 36,612.00	\$ (8,586.21)

Note: If you or a family member do not have an envelope number and would like a receipt for a donation, please contact the church office.

Council Recognitions

At their August and September meetings, the Church Council recognized the following individuals for their service to St. Timothy:

- ♦ Volunteer workers and donors for the Chicken Barbecue.
- ♦ Those who attended the worship service at Frey Village.
- ♦ Call to Worship initial callers, with 1533 calls.
- ♦ Al & Gina Kerchner for stripping and waxing floors.
- ♦ RJ Harris for repairs to carillon.
- ♦ Brownie Troop for \$100 contribution.
- ♦ Members who visited other congregations who have left ELCA.
- ♦ Tim Vogel for playing the saxophone during the worship services.
- ♦ Beckie Brunner for handling the office duties in Lynn's absence.
- ♦ Audrey Hettrick, Linda Townsend, Betty Semke and Dave Brunner for also helping out in the church office.



MEN'S BREAKFAST

Please Join Us on
October 1, 2011 @ 8:30 AM
at the Peppermill Diner
for food & fellowship.

1st Timers Eat FREE

Call 737-5243 for directions, if needed.

Christian Education News

EXCITING things will be happening in Sunday School this year! Come and gather with us as we sing, pray, and prepare our hearts and minds for faith formation opportunities in Sunday School. Everyone will join together in the sanctuary from 9:15-9:25 AM for this intergenerational Sunday School Opening. Following the opening, classes will dismiss to their rooms to continue their Sunday School class.

We Need Teachers, Students and Nursery

Attendants: We ask that you prayerfully consider taking an active part in our Education Program at St. Timothy.

Teachers: There will be teacher training for anyone interested. Our aim is to have enough teachers participating, so that no one is teaching all of the time. You will only be scheduled on the Sundays that work best for you. Our goal....NO BURNOUT!!

Students: We are all students, no matter what our age. Please come and join us in Sunday School. God isn't finished with us yet! J Registration forms for the children will be ready for you at the table in the back of the church or at the table outside in the near future. Also, registration may be done on Rally Day.



Nursery Attendants: For right now, we will be scheduling coverage at the 10:30 AM service only. If we find that we will need more coverage, we will expand at that time.

Please contact Paulette Black, Christian Education Coordinator at 796-1302(h), 379-0390(c) or email at christianeducation@StTim.com with questions or to volunteer.

Do You Like to Knit or Crochet?

Consider using those talents and join the *Prayer Shawl Ministry* at St. Timothy.

This growing group meets every other Friday from Noon to 2 PM (bring a bag lunch if you wish). A new evening meeting has begun the 4th Monday of the month.



To My Church Family at St. Timothy:

This has been a really difficult time for me and my family but I have to say thank you for the tremendous outpouring of cards, hugs, prayers and well wishes that we have received from everyone at St. Timothy. It truly makes a huge difference knowing that so many are praying for me and caring for me. I am not surprised that our wonderful church family would react this way but I am honestly humbled by it all.

Thank you so much.

Lynn Picioccio

**2nd & 4th
Sundays after
Children's
Sermon at
10:30 AM
Worship
Service**



Call to Worship – Fall Project Begins October 23rd

Call to Worship is our congregation's outreach ministry that seeks to identify un-churched individuals in our community and nurture them towards active membership. Identifying un-churched individuals takes place through reoccurring Projects.

Our Fall Project will begin on Sunday, October 23rd! Using a prepared message over a two week period and using phone numbers from a cross-reference telephone directory, our team of Initial Callers will make phone calls into our community asking individuals who are not active in a local church if they would like to receive information about St. Tim's. Our goal is to speak this message to at least 1,500 people.

Following two additional mailings, during the week of November 27th our team of Invitation Callers will contact each individual receiving our mailings to extend a warm and personal invitation to the Hospitality Sunday worship services on December 4th.

Perhaps the Lord is calling you to wear one of the following "hats" for our Fall Project?

An Initial Caller?	A Clerical Team Worker?	An Invitation Caller?
A Hospitality Sunday Assistant?	A Hospitality Sunday Greeter?	A Visitor Shepherd?

Please give prayerful consideration to being part of this ministry. Each ministry "hat" requires some simple training and a small amount of your time. Contact Jim Vogel with any questions at 761-4035 or kjvogel@gtcinternet.com.

May God's great love for you be your source of joy as you share Jesus with others!

An Evangelism thought....Sharing the hope that is in you – You can do it!

“But in your hearts set apart Christ as Lord. Always be prepared to give an answer to everyone who asks you to give the reason for the hope that you have.”

1 Peter 3:15

If somebody asked you to tell something you like about Jesus, could you do it? Undoubtedly you would be able to do that, and more.

Telling someone what you like about Jesus is what the Apostle Peter meant when he wrote “always be prepared.” This being prepared isn't so much memorizing an outline or preparing a presentation. Instead, this being prepared is more like explaining to a friend how God helped you make it through that tough time at work. Or how it is you haven't given up hope on that child that keeps getting into trouble. Or how you know God will get you through that difficult situation. Or how you know your loved one hasn't been surrendered to a disease or a grave, but to a loving God. There is hope in you that only comes from God. You have this hope because of God's promise of forgiveness and eternal life through Jesus freely giving Himself on the cross. And as God's forgiven child, you have a hope that is eager to share this wondrous message of forgiveness and eternal life with others!

Our world desperately needs to hear about this kind of hope. Each one of us has people in our lives that need to hear about the hope that is in you. We don't need to argue with them, convince them, or manipulate them. All we need to do is joyfully share the hope that is ours in Jesus and be confident that God will do the rest!



Journey In Faith

Via de Cristo

The Way of Christ

Coed Weekend #4
November 10-13, 2011

Weekend "short course" retreat for members of Christ's Church for a deeper understanding of the Christian faith and Church membership.

Who attends a weekend?

- People active in their congregations
- Pastors
- Associates in Ministry & Deaconesses
- Congregation Council members
- Sunday School staff
- Committee members
- Church musicians
- Any members looking for something more in their faith life

Contact Betty Harris, Marian Lefevre, Ron Lingle or Pastor Keith for information and questions.

www.journeyinfaithvdc.org

**October 2011
Monthly Food Pantry
Collection Benefiting
Ecumenical Food Pantry
at Messiah Lutheran &
New Hope Ministries**

**Canned Fruit
Instant Mashed Potatoes
Spaghetti Sauce**

Please place items in tote in



Give Me Your Worn, Torn & Tattered
Boy Scout Troop #296 will accept any worn, torn or tattered American flags and dispose of such flags in a proper manner. Please place flags in the designated box located in the hallway adjacent to the stairs near the church office.



Empties4Cash
YOUR RECYCLING AND FUNDRAISING PARTNER

You can



help St. Timothy's Nursery School by bringing your empty inkjet cartridges, in a Ziploc bag or original cartridge box, to church and depositing it into the container on the table in the lobby. The Nursery School will be paid up to \$4 for each cartridge. This is an ongoing collection effort, so please keep us in mind before you throw away your empty cartridges. **RECYCLE** and we **ALL WIN!**

Personal Toiletries

As you travel, please remember to collect those hotel sample size toiletries. St. Timothy has an ongoing collection project for New Hope Ministries and the Ecumenical Food Pantry at Messiah Lutheran Church. The collection container is located in the hallway before going downstairs, just outside the church office.



Help Habitat for Humanity with your Cans!

St. Timothy has an ongoing collection of aluminum cans to benefit Habitat for Humanity. There are 3 collection containers: one in the entryway, one in the back hallway and one downstairs. Please bring in your **EMPTY** aluminum cans and help a worthy cause! All proceeds stay in the Harrisburg area.



We Are Looking for Fresh Blood!

The St. Timothy Blood Donor Group is looking for new members. Every day someone in our community needs blood, whether it be an accident victim, newborn or cancer patient. There is still no acceptable substitute for human blood; donors are our only source. Although 85% of the adult population is eligible to donate, only about 7% ever do. If you are 18 years or older, in good health, and weigh at least 110 pounds, you may be eligible to donate blood. It normally takes less than 1 hour of your time and it gives you the satisfaction of knowing that you have given a special gift of life to the recipient. Please call Bill Brown at 761-7687 or the Central Pennsylvania Blood Bank at 1-800-771-0059 for more information.



Bible Trivia Challenge

On Sunday afternoon, **October 16, 2011**, from 3:00-5:00 pm, the West Shore Chapter of Thrivent Financial will hold its 4th annual **BIBLE TRIVIA CHALLENGE AND ELECTION EVENT** at Trindle Springs Lutheran Church, 14 State Rd. Mechanicsburg.

Who will be crowned the winner this year? Last year the top 3 church teams were Calvary (1st), Mt. Zion (2nd) and Trinity, Mechanicsburg (3rd). Bring a team from your church to see if you can dethrone one of these top churches.

Each church that participates should have a team consisting of 5 members; substitutes are allowed. Each team member must be age 13 and older. At least one team member must be a Thrivent member. Each congregational team will receive \$100 for participating in this event. Additional monies will be awarded to the top 3 teams and a light supper will be provided. The entry fee will be one item per person to be donated to a local food pantry. As part of the program, the election of the 2012 Leadership Board of the West Shore Chapter of Thrivent Financial will be held.

If you are interested in being part of the St. Timothy's team, please speak to Pastor Keith or contact the church office.



BIBLE TRIVIA
Challenge



Special Congregational Meeting

Sunday, October 9, 2011

(Immediately following the 10:30 AM service)

At the regular meeting of the Congregational Council on September 14, 2011, it was decided to call a special meeting of the Congregation on Sunday October 9, 2011 following the late worship service. The purpose of this meeting is to consider using moneys from the Capital Improvement Fund to re-roof the multipurpose room.

A professional roofing inspector recommended re-roofing to resolve the leaking problems. The biggest leak in the room has become a safety hazard as well as a danger to structural integrity.

If approved, we expect the work will be completed this fall and will cost around \$15,000.00.

We hope that you will be able to attend this meeting.

The What, Why and How of Thrivent Choice Dollars

Join us for this free 40-minute informational session. During the session, you'll learn how to direct your Thrivent Choice Dollars to Lutheran organizations that are near and dear to you – ***including your congregation.***

The session will be presented by Thrivent Financial for Lutherans representatives Jamie French, CPA, CFP®, Michael Gallagher, FIC, and Christopher VanHart, CFP®. No financial products will be sold. This is a **free educational** experience.

Please join us for “**The What, Why, and How of Thrivent Choice Dollars**” event on Sunday, October 23, 2011, from 12:30 - 2:00 pm at St. John's Lutheran Church, 44 W. Main St, Shiremanstown. There will be a light lunch served. There will also be a computer available to access the Thrivent web site.

To reserve a seat for yourself and a guest, please call 717-790-0725 or email jmusselman0725@comcast.net. The deadline to register is Monday, October 10, 2011.

For more information, contact any of the West Shore Chapter board members – contact information at <http://www.lutheranonline.com/westshorechapter>.



We're looking for talented people!

It takes a special person to be a Thrivent Financial representative. It takes confidence, commitment, honesty-qualities that make us proud of the professionals who serve our members.

Who do you know with these qualities?

- High Level of Integrity
- Self Motivation
- Seek to Excel
- Desire to Help Others
- Demonstrate Confidence
- Highly Determined
- Focus on Results
- Assume Accountability
- Personable and Empathetic

As a Thrivent Financial representative, you'll help secure financial futures and make a difference in people's lives. Join our team and you'll find we offer more than work, we offer *Work with Purpose*®

For more information, to apply, or to make a referral, visit www.thrivent.com/careers. You may also contact Todd Beasley, Recruiting Manager at 717-813-7184 or at todd.beasley@thrivent.com.

Stewardship – Ends and Means

Luke 16: 1 - 15

It is important to know the difference between ends and means, isn't it? Mix-up the two and you have a mixed-up life. Take the popular quip, for example; "I don't eat to live, I live to eat!" The person is probably kidding. But, if for the sake of discussion, the person truly does "live to eat", then the person quite literally has a big problem. And what is the problem? The immediate problem may appear to be over-eating or even gluttony. But these are not the real problem. The real problem for the person who "lives to eat" is the confusion of ends and means. Eating, though essential to life, should always be the means to life, never the end of life.

Eating, of course, is just one example of how each one of us ends up with mixed-up lives because we confuse ends and means. Perhaps eating isn't your thing so you're not yet relating. Fair enough. Then let's put this same sentence into question form and give it a few slight twists. Do you work to live, or do you live to work? Do you acquire nice things in order to live, or do you live in order to acquire nice things? Do you exercise to live, or do you live to exercise? You get the point. It's amazing how creative we can be at taking some means to life and making them the end of our lives.

The question Jesus is asking us is simply this. "How shrewd are you and I when it comes to ends and means?" Do you and I understand that everything material is but the means to life and never its end? Do you and I realize that the only end worth living for is eternal, that is to say, our relationship with the only true God, whose life is not bound by the limitations of time and space? Asked another way, "Does your life and mine have only an eternal end and only material means?" Or do we sometimes get the two mixed-up? Do we ever let material means become the focus or the end-all of our lives? Of course we do! What else is idolatry, but making some material thing more important than the one eternal God! What else is greed, but making material things the end of life! What else is worry, but putting material needs ahead of trust in our eternal Father! Do we not usually seek first everything else, and then add in God's kingdom, whenever it is a useful means towards achieving our material ends?

This is why Jesus, the Shrewd Manager that He is, gave up His eternal place as the Son of God, in order to save us from the consequences of our own foolishness, confusion and misplaced priorities. Jesus came into the world not only to demand that He, as God's Son, should be the end-all of our lives. He came also to be the means of our forgiveness. Having completed His task as Savior of our mixed-up lives, He ascended again to His Father where, with the Holy Spirit, they live and rule as one eternal God.

And that same Holy Spirit continues to come and live among us, helping us to keep our eternal ends and material means in their proper relationship. He comes to us through the Means of Grace, that is, the eternal promises of Christ in the Gospel proclaimed by a finite, forgiven human being; in the material waters of Holy Baptism; and in the worldly staples of bread and wine. Through faith, He enables us again to redirect the focus of our lives towards Christ, its eternal end. Through faith, the Holy Spirit gives us opportunities each day to use our material means and resources for Him and for the needs of His kingdom.

To put it one final way: Because of what our Heavenly Father has done for us through Christ and continues to do for us through His Holy Spirit, we are able to spend our lives celebrating Jesus Christ as THE LIVING END, and to do it by ALL MEANS!

October Birthdays

October 1st	Camille Frankenfield
October 2nd	Debra Eslinger / Matthew Picioccio
October 3rd	Brooke Pfisterer / Samantha Rittner
October 5th	Rich Musselman
October 6th	Curt Bowen / Michael Shoaff
October 7th	Jan Lord
October 8th	David Frankenfield
October 9th	Karissa Kerchner
October 10th	Melissa Leggett
October 11th	Patricia Douty
October 12th	Richard Conrad / Lauren Palmer
October 13th	Cynthia Allen-Fuss / Alexandra Housley
October 14th	Philip Gift / Marisa McClellan
October 16th	Michael Hansen
October 17th	Alissa Bowen
October 18th	John Bowling / Peter Nanov / Doris Nisley
October 19th	Kimberly Housley
October 21st	Hailey Conrad
October 23rd	Dolores Beutel
October 25th	Jane Beaverson / Susan Beaverson
October 26th	Jake Haddad / Lara Eslinger Snyder / Donna Zembower
October 27th	Charles Bricker
October 31st	Ashlee Conrad / Kevin Craig / Andrew Jones / Nancy Pfisterer



Happy Birthday



Please feel free to fill out a paper with your prayer request and place it in the prayer box. The prayer box is located on the ledge as you enter the sanctuary. The name(s) will be added to St. Timothy's prayer list.

St. Timothy Prayer List

Please keep the following people in your prayers:

The Family of Nancy Carbone
 The Family of Maria Porpora
 The Family of Dave Sterling
 The Linthicum Family
 David Anderson
 Carol Bowser
 Mark Chance
 Vivian Craig
 Barbara Curtis
 Tom Daise
 Nancy Frankenfield

John Gailey
 Maxine Gottstein
 Carl & JoAnn Haubert
 Audrey Hettrick
 Jerry Jones
 Doris Kline
 Lynn Picioccio
 Michael Simons
 Bill Steinhart
 Doris Kline
 Marsha Walters

Military Overseas:

Jamie DeSpain
 Chaplain John Teitman



October 2011 WORSHIP ASSISTANTS


8:00 AM Worship Service

Role	October 2nd	October 9th	October 16th	October 23rd	October 30th
Assisting Minister	Jim Vogel	Camille Frankenfield	Linda Townsend	Audrey Hettrick	Linda Townsend
Lector	Karen Bowen	Emily Foster	Debra Barry	MaryLou Suckling	Linda Townsend
Usher	Russ & Vivian DeLuca	Tom & Sheila Daise	Dave & Pat Acker-Bailey	Bill & Sue Schlegel	Russ & Bonnie Eves
Greeter	Russ & Bonnie Eves	Jack & June Hoerner	Steve & Beverly Brader	Bernice Markle	Jack & June Hoerner
Acolytes	Camille Frankenfield	Emily Foster	Lisa Nanov	Jocelyn Basom Emily Foster	Jocelyn Basom Lisa Nanov

10:30 AM Worship Service

Assisting Minister	Andrea Reede	Deanna Frankovich	Deanna Frankovich	RJ Harris	Deanna Frankovich
Lector	Jim Vogel	Spike Spilker	Matt Wolf	Paulette Black	Amy Ewbank
Usher	Phil & Betty Semke	Bill Brown John Hileman	Curt & Karen Bowen	Ken & Paulette Black	Amy Ewbank Marian Lefevre
Greeter	Dee Titus	Cindy Hubler	Janet Hubler	Deb Eslinger	Ron & Sandy Lingle
Acolytes	Jon Hansen Josh Hansen	Michael Simons Matt Vogel	Samantha Rittner	Matt Vogel Tim Vogel	Samantha Rittner Michael Simons
Nursery Assistant	Ron & Sandy Lingle		Bonnie Harris	Anna Malcein	
Altar Guild	Dee Titus	Janet Alexander	Paulette Black	Mary Urffer	Marian Lefevre

OCTOBER 2011

Sunday	Monday	Tuesday	Wednesday	Thursday	Friday	Saturday
						<p>1</p> <p>8:30 AM Men's Breakfast</p> 
<p>2</p> <p><u>16th Sunday after Pentecost</u></p> <p>8:00 AM Traditional Worship 9:15 AM Sunday School & Confirmation 10:30 AM Contemporary Worship 4:30 PM Brownies</p>	<p>3</p> <p>7:00 PM Property 7:00 PM Boy Scouts</p> 	<p>4</p> <p>6:30 PM NAMI 7:00 PM Mutual Ministry</p>	<p>5</p> <p>10:00 AM Pericope Noon Food Pantry Volunteers Meet</p>	<p>6</p> <p>10:30 AM Staff Meeting 6:00 PM Exec 6:30 PM Bible Study 7:30 PM Senior Choir</p>	<p>7</p> <p>Noon Prayer Shawl Ministry</p> 	<p>8</p>
<p>9</p> <p><u>17th Sunday after Pentecost</u></p> <p>8:00 AM Traditional Worship 9:15 AM Sunday School 10:30 AM Traditional Worship –Children's Church 11:45 AM Special Congregational Meeting</p> 	<p>10</p> <p>7:00 PM Boy Scouts</p>	<p>11</p> <p>6:30 PM NAMI 7:00 PM Boy Scout Leaders</p>	<p>12</p> <p>10:00 AM Pericope 7:00 PM Council</p>	<p>13</p> <p>6:30 PM Bible Study 7:30 PM Senior Choir</p>	<p>14</p> 	<p>15</p>
<p>16</p> <p><u>Luke the Evangelist</u> <i>Healing Services</i></p> <p>8:00 AM Contemporary Worship 9:15 AM Sunday School & Confirmation 10:30 AM Contemporary Worship 2:30 PM Brownies</p>	<p>17</p> <p>6:30 PM Fellowship @ Fusion Fire 7:00 PM Boy Scouts</p>	<p>18</p> <p>6:30 PM NAMI 7:30 PM Worship</p>	<p>19</p> <p>10:00 AM Pericope Newsletter</p> 	<p>20</p> <p>6:30 PM Bible Study 7:30 PM Senior Choir</p>	<p>21</p> <p>Noon Prayer Shawl Ministry</p>	<p>22</p> <p>9:00 AM New Members Class</p>
<p>23</p> <p><u>19th Sunday after Pentecost</u></p> <p>8:00 AM Traditional Worship 9:15 AM Sunday School & Small Group Sessions 10:30 AM Traditional Worship –Children's Church</p>	<p>24</p> <p>7:00 PM Prayer Shawl Ministry 7:00 PM Boy Scouts</p>	<p>25</p> <p>6:30 PM NAMI</p>	<p>26</p> <p>10:00 AM Pericope</p>	<p>27</p> <p>6:30 PM Bible Study No Senior Choir</p>	<p>28</p>	<p>29</p>
<p>30</p> <p><u>Reformation Sunday</u> <i>Confirmation</i></p> <p>8:00 AM Traditional Worship 9:15 AM Sunday School & Confirmation 10:30 AM Traditional Worship 2:30 PM Brownies</p> 	<p>31</p> <p>7:00 PM Boy Scouts</p>					



St. Timothy Evangelical Lutheran Church
4200 Carlisle Pike
Camp Hill, PA 17011

NONPROFIT ORG
US POSTAGE PAID
CAMP HILL, PA
PERMIT NO. 42

Address Service Requested

2011 Church Council

- John Hileman, *President***
- Jim Vogel, *Vice-President***
- Deanna Frankovich, *Secretary***
- Kathie Craft**
- Stephanie Eslinger**
- Cheryl Foster**
- Camille Frankenfield**
- Nancy Frankenfield**
- Betty Harris**
- Audrey Hettrick**
- Susan Rittner**
- Jamie Smathers**
- Rev. Keith H. Eslinger, *Pastor***
- Karen Vogel, *Treasurer***
- Al Kerchner, *Assistant Treasurer***
- Mary Jane Steinhart, *Financial Secretary***
- Paulette Black, *Assistant Financial Secretary***
- Bonnie Harris, *Assistant Financial Secretary***

THE MISSION EDGE is published monthly at
ST. TIMOTHY LUTHERAN CHURCH
4200 Carlisle Pike, Camp Hill, PA 17011

Volume 19 • October 2011 • No. 10

Newsletter Editor Judy Musselman

CHURCH STAFF

Pastor..... Rev. Keith Heim Eslinger
 Director of Music Christine C. Brown
 Secretary..... Interim Beckie Brunner
 Director of Nursery School Gina Kerchner
 Church Office737-5243 or 737-3773

Email 1..... pastor@sttim.com
 Email 2.....secretary@sttim.com
 Articlesjmusselman0725@comcast.net
 Website.....www.sttim.com